

Database Prototype
for

The University of Colorado
Health Sciences Center

Clinical Medicine Assessment Tool (CMAT)



Lisa Foegen
Brian Knowles
Dianne Calhoun
Veronika Eskova
Jim Ladd

Table of Contents

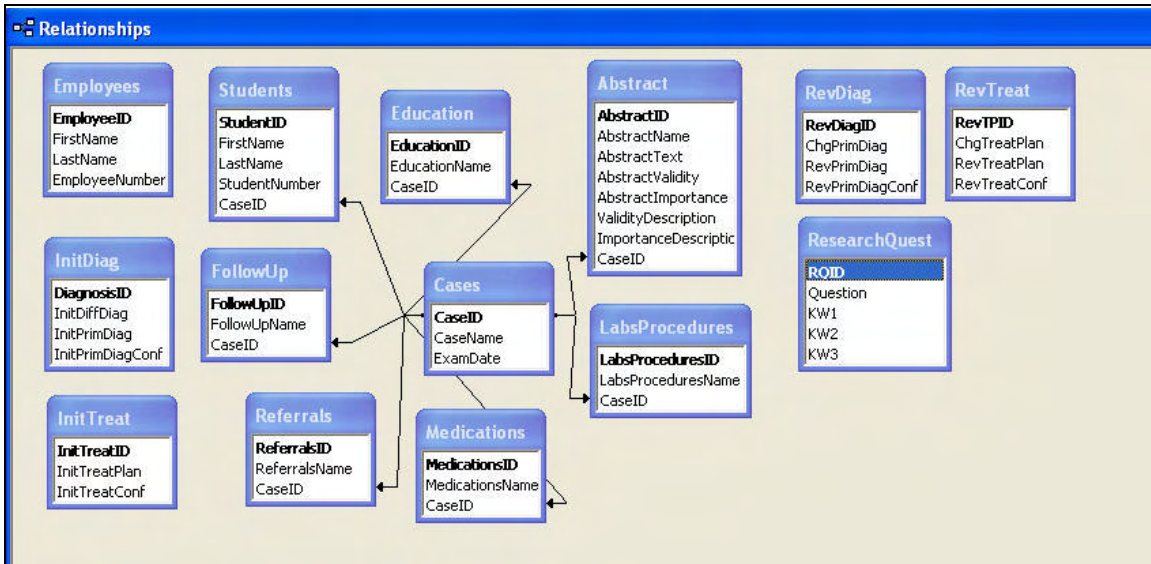
Database prototype.....	3
Database images.....	4
Database structure.....	4
Abstract database table	4
Cases database table	5
Education database table	6
Employees database table	7
Follow Up database table	8
Initial Diagnosis Table	9
Initial Treatment Table	10
Labs/Procedures Table	11
Medications Table	12
Referrals Table	13
Research Question Table.....	14
Revised Diagnosis Table	15
Revised Treatment Table	16
Students Table	17

Database prototype

Database images

Database structure

This image illustrates the administration database structure.



Abstract database table

The following table illustrates the Abstract database table.

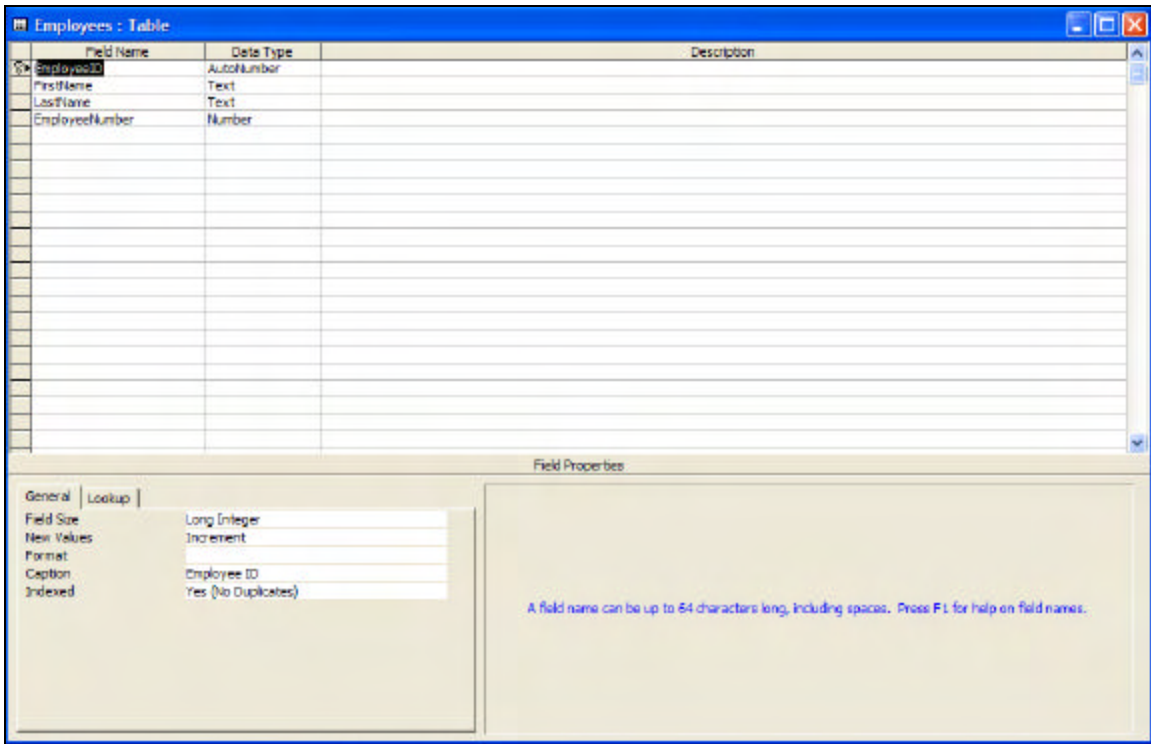
Field Name	Data Type	Description
AbstractID	AutoNumber	
AbstractName	Text	
AbstractText	Memo	
AbstractValidity	Yes/No	
AbstractImportance	Yes/No	
ValidityDescription	Text	
ImportanceDescription	Text	
CaseID	Number	

Field Properties	
General	Lookup
Field Size	Long Integer
New Values	Increment
Format	
Caption	
Indexed	Yes (No Duplicates)

A field name can be up to 64 characters long, including spaces. Press F1 for help on field names.

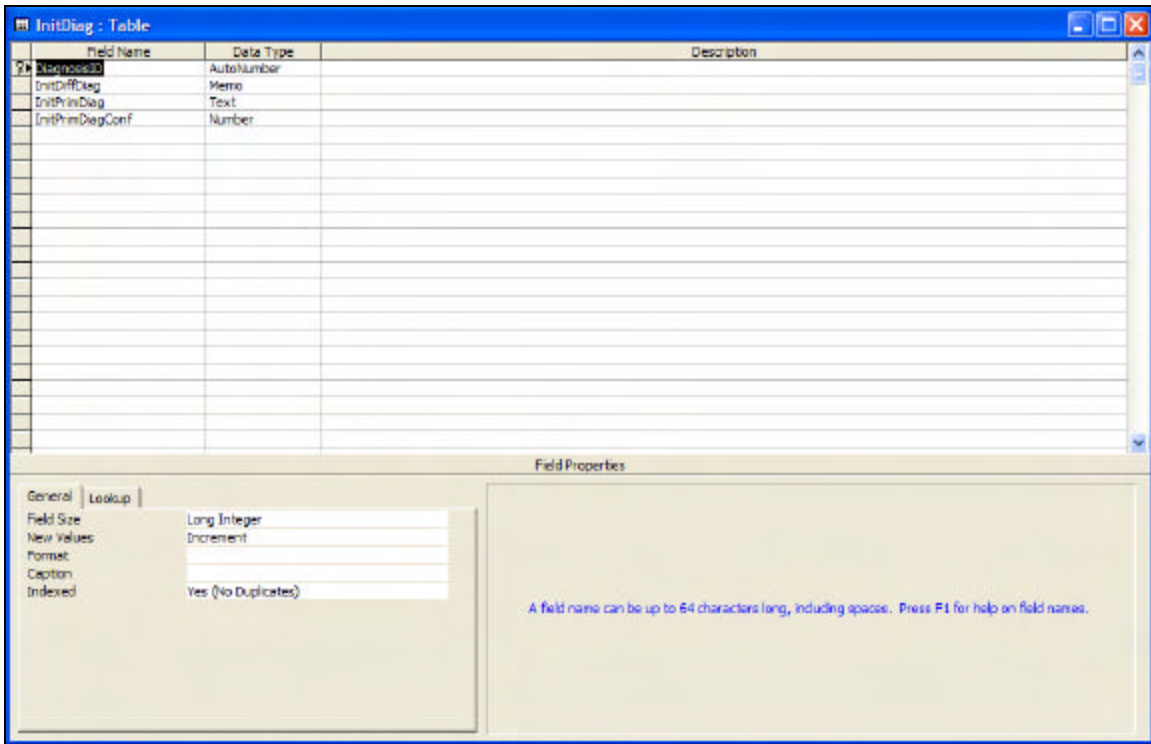
Employees database table

The following table illustrates the Employees database table.



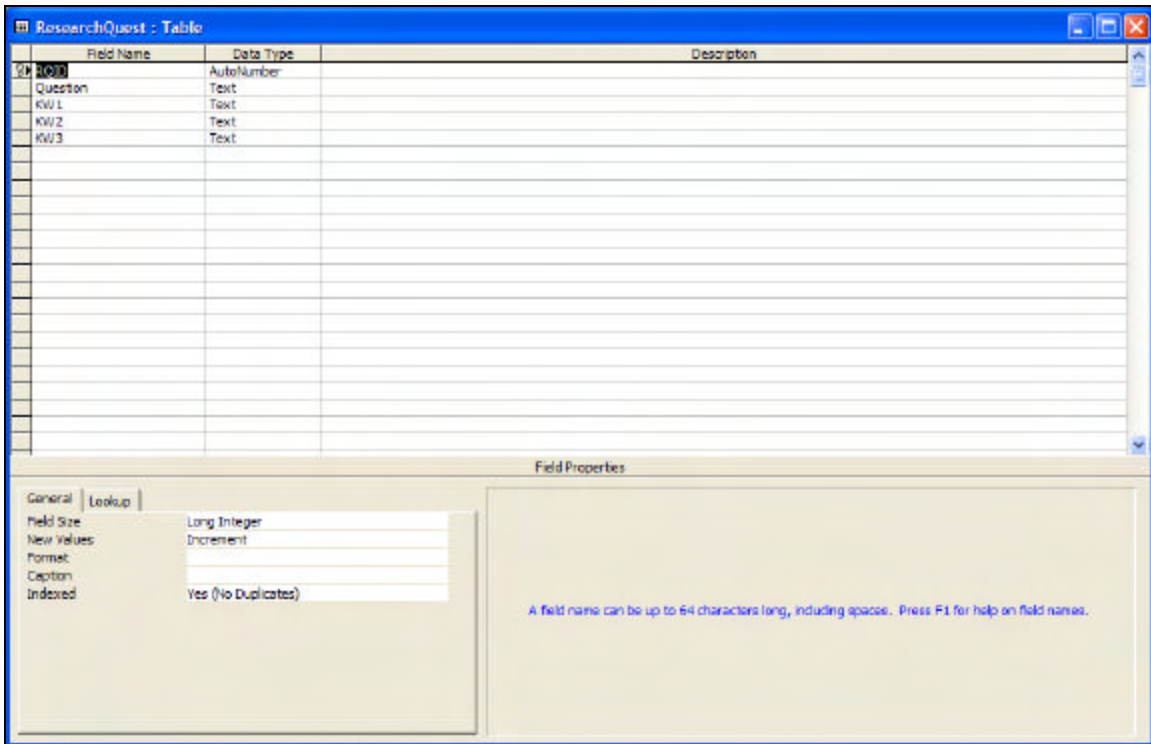
Initial Diagnosis Table

The following table illustrates the Initial Diagnosis database table.



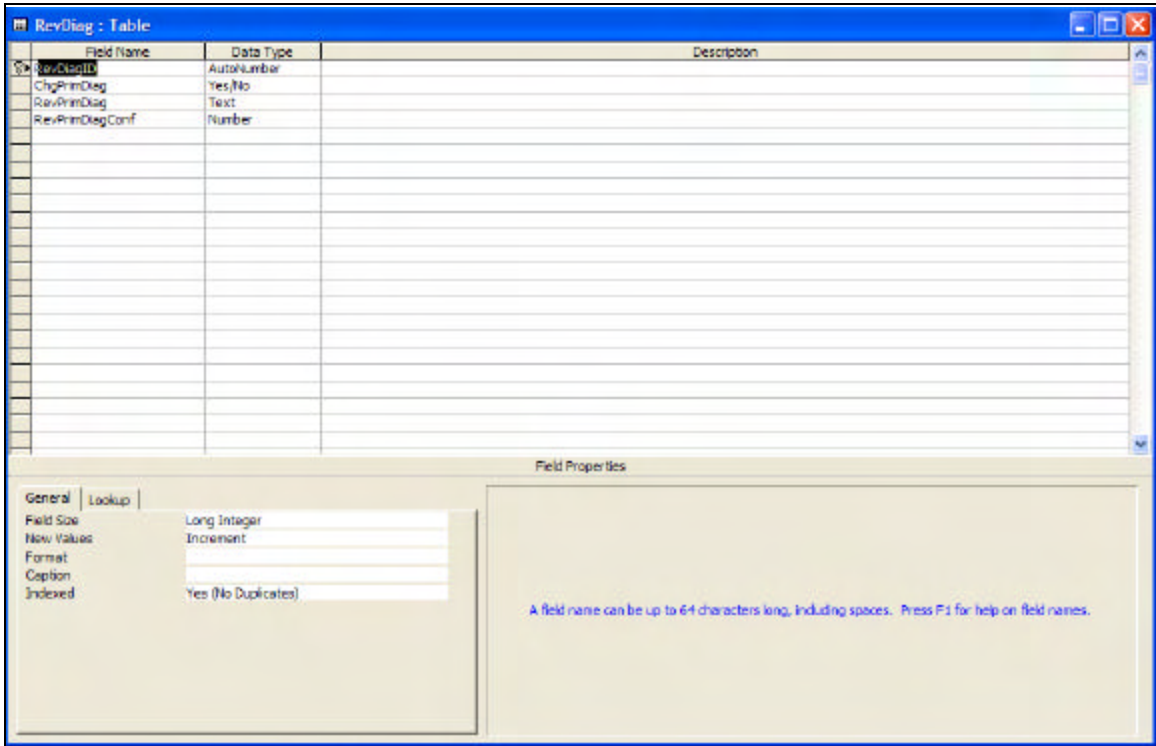
Research Question Table

The following table illustrates the Research Question database table.



Revised Diagnosis Table

The following table illustrates the Revised Diagnosis database table.



Students Table

The following table illustrates the Students database table.

